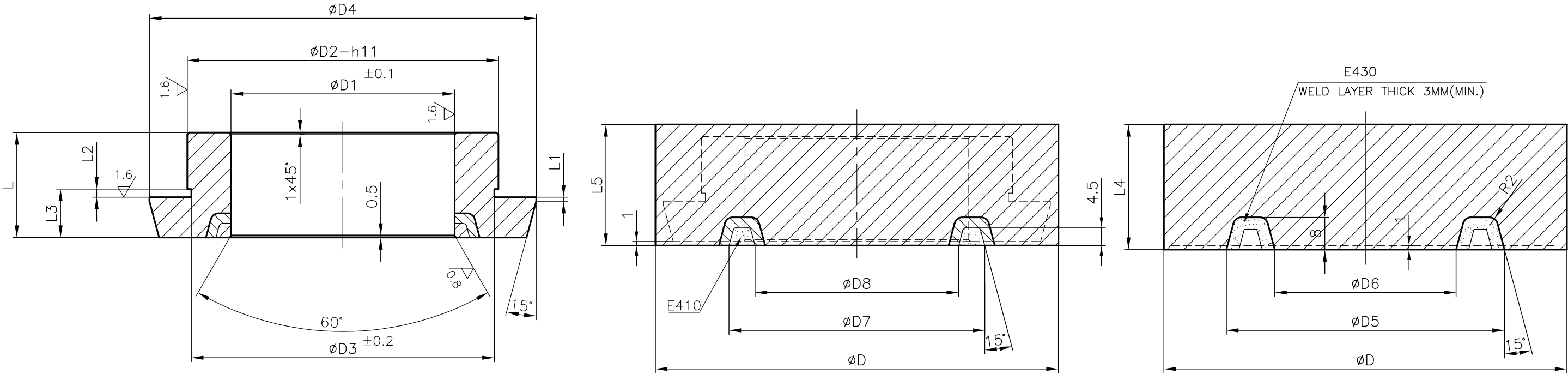


3-V-0000-23526/02
DRAWING NO.

6.3/ 1.6/ 0.8/

SL. No.	DRAWING NO.	COMP.CODE	MATL.SPECN.	SUGGESTED MIN.SIZE	RAW MATL. Wt.(kg)	SCRAP SORT	DIMENSIONS																		NET Wt.(kg)
							øD	øD1	øD2	øD3	øD4	øD5	øD6	øD7	øD8	L	L1	L2	L3	L4	L5				
01	3-V-P366-23526/02	93 130 620 0000	ASTM A105	ø100X35	2.16	10	100	55.5	79.0	75.0	96	69	45	63.5	50.5	26.0	1.0	2.0	12.0	31	30				0.65
			CERTIFY																						
			NORMALISED																						

ø79.0 - h11	0
	-0.185


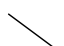
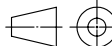


NOTE

01. DOTTED LINE INDICATES FINISHED MACHINED PROFILE.
02. BREAK ALL SHARP CORNERS.

REV	DATE	ALTERED	M.SRINIVASAN	REV	DATE	ALTERED	M.SRINIVASAN
02	22.10.07	CHD & APPD	P.BOOMINATHAN	01	25.09.06	CHD & APPD	M.RAJAKUMAR
DCP:800760	BACKSEAT CHAMFER 0.5X60° WAS 2X60°			DCP:800625	IN SL. No.01 DIMENSION ø79.0 WAS ø77.0, E410&E430 WAS STELLITE-6		

CAUTION: The information on this document is the property of BHARAT HEAVY ELECTRICALS LTD. It must not be used directly or indirectly in any way detrimental to the interest of the company.

—	—	—	—	—	—	—	—	—	—	
NO OFF	DESCRIPTION	MATL CODE	MATL SPECN	HEAT TREATMENT	SCRAP SORT	NET WT (kg)	GROSS WT (kg)	DRAWING No	ITEM No	
TYPE OF PRODUCT OR NAME OF CUSTOMER/PROJECT										
<div> 365-121</div>				BHARAT HEAVY ELECTRICALS LTD., UNIT: HIGH PRESSURE BOILER PLANT. TIRUCHIRAPALLI-620014.		DRN	NAME M.SRINIVASAN	SIGN	DATE 29.08.05	NO.OF VAR.
						CHD	K.S.RAMAN		29.08.05	
						APPD	K.S.RAMAN		29.08.05	
DEPT VL			SCALE	WEIGHT (KG).		REFERENCE INFORMATIONS				NO. OF ITEMS
CODE 320			NTS	REF.TABLE		CAD :C323526				
TITLE					CARD CODE	DRAWING NO.				REV
BACK SEAT ASSY.					U 01	3-V-0000-23526				02